

Hydraulic Hose Assemblies

ProPulse A Schieffer Company, is a world-leading manufacturer of custom OEM hose assemblies. In addition to providing complete assemblies, ProPulse manufactures thermoplastic hose using proprietary processes under strict quality control and serves major OEMs from its Peosta, Iowa USA factory with zero defects and 99.9% on-time delivery.

SIZE RANGE		WORKING PRESSURE RANGE	
Rubber	Thermoplastic	Rubber	Thermoplastic
-02 to -32	-02 to -08	580 to 6090 psi	420 Bar
1/8" to 2"	1/8" to 1/2"	Up to 420 bar	[3045 psi]



Full range of rubber hose per SAE J517 including SAE 100R1, 100R2, 100R4, and 100R12 thru 100R19. This range include rubber, multi-spiral rubber, stainless PTFE, and compact rubber hose. Hose is produced as ISO 9001:2015 compliant with full PPAP capability. A full-line catalog can be seen at the company website: www.powermovingforward.com

Thermoplastic Hose

In more recent years, thermoplastic hydraulic hoses have been used in place of rubber as users become more familiar with the unique advantages of thermoplastic.

- **Durable:** Abrasion resitant with textured matte-finish outer cover.
 - **Weight Savings:** Thermoplastic is lighterweight than wire reinforced rubber.
 - **Cost Savings:** Thermoplastic is less expensive than wire reinforced rubber.
- **On Time Delivery:** With production in the USA, ProPulse has the advantage to respond rapidly to market swings and throttle production to meet market demand.
 - **Reliable:** Meets or exceeds hose specification SAE J517.
 - **Defect Free:** In-house production ensures reliable quality. Only virgin material is used.

1800 SERIES	HOSE SIZE			HOSE I.D. (MAX)		HOSE O.D. (MAX)		WORKING PRESSURE		PROOF PRESSURE		BURST PRESSURE		BEND RADIUS	
PROPULSE HOSE PART NUMBER	DN	DASH	INCH	MM	INCH	MM	INCH	BAR	PSI	BAR	PSI	BAR	PSI	MM	INCH
1800 - 02	3	-2	1/8	4	0.16	9.5	0.37	210	3045	420	6090	840	12180	25	0.98
1800 - 03	5	-3	3/16	5.4	0.21	10.8	0.43	210	3045	420	6090	840	12180	30	1.18
1800 - 04	6	-4	1/4	7	0.28	13.5	0.53	210	3045	420	6090	840	12180	45	1.77
1800 - 05	8	-5	5/16	8.5	0.33	16.6	0.65	210	3045	420	6090	840	12180	50	1.97
1800 - 06	10	-6	3/8	10.3	0.41	18.4	0.72	210	3045	420	6090	840	12180	75	2.95
1800 - 08	12	-8	1/2	13.5	0.53	22.8	0.9	210	3045	420	6090	840	12180	90	3.54

Cooling Solutions

ASA is headquartered in Austria and offers a full range of cooling solutions including air, forced air, plate as well as shell and tube types used in oil, hydraulic and electric motor cooling applications. ASA can provide a custom cooling system for your specific application.



Low Line Series

Heat Removal	Max Pressure	Rated Flow	Fan Motor Types
10 kW	26 Bar	100 lpm	DC and AC
[13 HP]	[377 psi]	[26 gpm]	



TT Rail Series

Heat Removal	Max Pressure	Rated Flow	Fan Motor Types
45 kW	26 Bar	300 lpm	DC, AC and Hydraulic
[61 HP]	[377 psi]	[79 gpm]	



Eco-Line Cooling Solutions for Electrification

Pumps	Tanks	Plate Coolers	Coolers
Gerotor	Custom Sizes	Battery Cooling	Air, Water and Fan



Partner Suppliers



- Piston pumps and motors
- Modular subplate and mono-block valves



- Hydraulic Hose Assemblies
- Thermoplastic and wire braid rubber
- Precleaned and sealed



- Hydraulic Coolers



- Piston Pumps
- Piston Pumps
- PTO's



- Axial piston pumps and motors
- Sectional and mono-block valves
- Gear pumps and motors



- Gear Pumps and Gear Motors
- Directional Control Valves



- Drive Couplings



- Hydraulic Gages



- Hose cleaning system



- Gear Drives



- Quick Couplings



- Filters



- DC Powerpacks

MJ Hydrostatics is a value-added engineering and design provider of hydraulic drive components, services and systems. Our expertise and extensive application knowledge has been gleaned from decades of experience including system design, repair and remanufacture of pumps, motors and controls. Our products and services include customized power units, packaged drive systems, and application trouble-shooting including data acquisition and training with tools to keep your systems running. Our focus is on supplying high quality components from world-class manufacturers.

Our extensive testing capability includes three test stands each customized for specialized performance testing to ensure our solutions fully meet your requirements. We are well-versed in system contamination control and cooling systems to ensure long life and trouble-free performance.

MJ Hydrostatics started as a small shop and has grown to be in internationally known hydraulic technical resource that is trusted by customers.



507.451.2010 | 877.451.2010 | mjhydrostatics.com | sales@mjhydrostatics.com
3031 County Rd 45 South | Owatonna, MN 55060

- QUALITY COMPONENTS
- EXTREME POWER
- PRECISE CONTROL
- EXTENSIVE CAPABILITIES



TRUSTWORTHY • DEPENDABLE • KNOWLEDGEABLE

Piston Pumps, Piston Motors and Valves



Linde Hydraulics offers a wide range of performance-matched hydraulic piston pumps, piston motors, valves and control components. Linde components can be combined into drive systems that offer efficient power transmission with precise infinitely variable speed control and trouble-free operation. Linde Hydraulic Products are well known for thier rugged reliability in forestry, excavating, material handling, marine, agricultural harvesting as well as oil and gas applications which demand dependable performance. They provide precise speed and/or torque control.



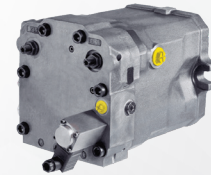
HPV-02 Variable Displacement Pump for Closed-Loop Applications

Displacement Range	Max Pressure	Input Torque	Max Speed Range*
54.7cc - 281.9cc	500 bar	374 - 1929 Nm	3900- 2400 RPM
[3.33 - 17.19 cu inch]	[7250 psi]	3310 - 16675 in-lb	



HPR-02 Self Regulating Pump for Open-Loop Applications

Displacement Range	Max Pressure	Input Torque	Max Speed Range*
54.7cc - 281.9cc	500 bar	374 - 1884 Nm	2700 - 2000 RPM
[3.33 - 17.19 cu inch]	[7250 psi]	3310 - 19976	



HMV-02 Variable Displacement Motor

Displacement Range	Max Pressure	Output Torque	Max Speed Range*
54.7cc - 331.2	500 bar	374 - 2257 Nm	4300 - 2900 RPM
[3.33 - 20.2 cu inch]	[7250 psi]	3310 - 19976	



HMF-02 Fixed Displacement Motor

Displacement Range	Max Pressure	Output Torque	Max Speed Range*
35.6cc - 281.9cc	500 bar	244 - 1929 Nm	4800 - 2700 RPM
[2.17 - 17.19 cu inch]	[7250 psi]	2159 - 17073 in-lb	



CMV Bent Axis Variable Motor

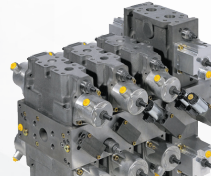
Displacement Range	Max Pressure	Output Torque	Max Speed Range*
62cc - 217.9cc	500 bar	411 - 1471 Nm	4450 - 2900 RPM
[3.78 - 13.29 cu inch]	[7250 psi]	3637 - 13019 in-lb	



CMF Bent Axis Variable Motor

Displacement Range	Max Pressure	Output Torque	Max Speed*
80cc	500 bar	547 Nm	4500
[4.88 cu inch]	[7250 psi]	4841 in-lb	

*Max Speed Range is for each displacement range, respectively. Maxium speed is rated for continuous operation. The units can be run at higher speeds on an intermittent basis. Please refer to the catalog for more detailed performance charts and specifications.



VT Modular Directional Control Valves - Up to 8 functions - Load Sensing

Max. Flow Total	Max Flow A/B	Pilot Pressure	Max Working Pressure
700 lpm	600 lpm	6 - 19 bar	420 bar
[184 gpm]	[158 gpm]	[87 - 275 psi]	[6090 psi]

Three frame sizes are available with a common sub-plate mount - VW18, VW25, VW30. Modular assembly for up to 8 functions with a variety of control spools. They can be configured with hydraulic or electric pilot control. The valve system provides load sensing with post compensation logic proportional to each function when system is fully saturated.The modularity system provides design flexibility and fast prototyping and a wide variety of options. For high volume applicatoins, mono-block configurations can be offered for a compact, cost effective, custom package solution.

Fluid Monitoring Gauges



Fluidmatics provides live fluid condition monitoring systems.

Nearly 80% of hydraulic failures are preventable and caused by system contamination. The Fluidmatics “Dirt Gauge” allows you to see oil contamination levels in real-time. Particle count is displayed per ISO fluid cleanliness three digit code specification. Water saturation can be optionally monitored as well.

Two configurations are available - portable or permanen mount and both have an integral pump to provide live data recording without having to extract and and ship oil samples for outside analysis.

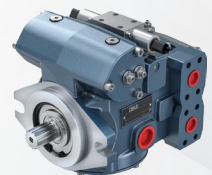
The system is timely, accurate and convenient. It can also be used as part of a production QC system for new machine production or new unit commissioning.



Piston Pumps, Piston Motors, Gear Pumps, Gear Motors, Valves

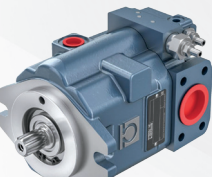


Bondioli & Pavesi is based in Italy and is a global manufacturer of piston pumps, piston motors, gear pumps, gear motors, valves and additional products suited for mobile applications. They offer units in smaller displacements than many suppliers to provide compact and cost-effective designs. Their Bywire Modular Valves offer design flexibility with a wide range of circuits.



HPP / HMP Variable Displacement Pumps for Closed-Loop Applications

Displacement Range	Working Pressure	Peak Pressure	Speed Range
7cc - 150cc	280 bar	320 bar	3600- 500 RPM
[.43 - 9.15 cu inch]	[4060 psi]	[4640 psi]	



HPA Variable Displacement Pumps for Open-Loop Applications

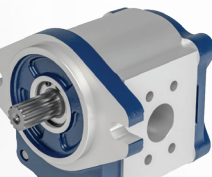
Displacement Range	Max Pressure	Peak Pressure	Speed Range
5cc - 90cc	280 bar	350 bar	2700 - 2000 RPM
[.30 - 5.45 cu inch]	[4060 psi]	[5075 psi]	



HMBF Fixed Displacement Bent Axis Motors

Displacement Range	Max Pressure	Output Torque	Max Speed Range*
10cc - 125cc	350 Bar	57 - 697 Nm	3000 - 1600 RPM
[.61 - 7.62 cu inch]	[5075 psi]	[504 - 6169 in-lb]	

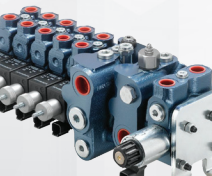
*Max speeds are respective to displacement range. Larger displacments run at lower speed.



Gear Pump and Gear Motors - Aluminum Body - Cast Iron Covers

Group	Mount	Displacement Range	Working Pressure Range*	Max Speed Range*
1	SAE AA 2B	.08 - .48 cu in	3200 - 2320 psi	3500 - 3000 rpm
2	SAE A 2B	.27 - 2.47 cu in	3480 - 2030 psi	3500 - 2500 rpm
3	SAE B 2B	1.31 - 5.37	3200 - 1600 psi	3000 - 2500 rpm

*Max pressure and Max speed are respective to each displacement range. Larger displacements are rated at lower pressures and speeds than smaller displacements.



BW Series ByWire Modular Valves

Flow Frame Sizes	4 Platforms Available		Max Working Pressure
50, 100, 140, 250 lpm	OC - Open Cetnter	LS - Load Sense	300 bar
[13, 26., 37, 66 gpm]	HL - Hybrid LS	EL - Electronic	[4350 psi]

The ByWire modular system has 4 frame sizes that can be configured to provide a wide variety of functions. Each section can be individual customized for hydraulic or electric actuation. Elements can be pre-compensated or flow sharing type suitable for a fixed or variable pump.

Power Units, Systems and Services



MJ Hydrostatics designs and builds custom power units for a variety of applications including concrete forming, construction, agriculture, industrial and others. We have the capability to design custom units including 12V DC, AC powered, gas and diesel powered over 500 HP. A wide variety of circuits and controls are available including open loop, closed loop, open center, closed center, load sensing, fixed and variable displacements. Controls can be manual, electric and proportional or simple on/off.



Power Units

Prime Mover	Power Range	Pump Types	Max. Pressure	Max. Flow
12V / 24V DC	.5Kw-8Kw	Gear / Plston	3500 psi	4 gpm
110-240V AC	1Kw-100Kw	Gear / Piston / Vane	5000 psi	40 gpm
Gas (Honda)	2 - 22 Hp	Gear / Piston / Vane	5000 psi	60 gpm
Diesel	25 - 650 Hp	Gear / Piston / Vane	7250 psi	150 gpm

Note, higher flows can be provided at lower pressures with a wide range of circuits and controls. Custom fluids including biodegradable others special for low or high operating temperatures. Cooling systems can be added including radiator, plate as well as shell & tube types. Mounting types can also be specified including fixed stationary, skid or portable types along with a wide variety of reservior types and sizes.

Hydraulic Engineering, Design, Testing and Application Problem-Solving

MJ Hydrostatics has decades of field experience accumulated over the years as a repair and reman business. Our roots are in mobile hydraulic applications and we have data acquision instrumentation capability to diagnose and solve your application problems. Let our experts help you improve your equipment performance, efficiency, controlability and reliability with reduced downtime. MJ Hydrostatics provides hydraulic system solutions.

Repair and Remanufacture of Hydraulic Pumps and Motors

MJ Hydrostatics has over 20 years of experience rebuilding and repairing hydraulic piston pumps and piston motors. We have trained technicians who can remanufacture your pump and/or motor to refurbished condition and we performance test every unit we rebuild. We have 3 test stands and our largest dyno is capable to 600 HP. In addition, MJ Hydrostatics is an authorized repair center for Linde Hydraulics and we have the specialized knowledge and tools to properly service equipment. We maintain a large inventory of parts and units on-hand to provide fast turnaround and get you back up and running. We service nearly all makes and models used on construction equopment (dozers, excavators, trenchers), agriculture equipment (combines, forage harvesters, sprayers) aerial workplatforms, forestry harvesting, material handling, work trucks (transit mixers), mining, oil & gas and other equipment.



Typical turnaround time is 5-7 days. Ask us about unit core exchanges for possible faster delivery. We also provide proactive OEM REMAN programs so you can ensure your customers have a rapid repair resource to keep them up and running and efficiently meet your customer aftermarket needs.